



Chronic Obstructive Pulmonary Disease in America

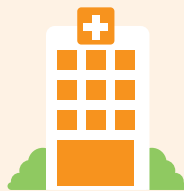
More than **15 Million** Americans or **6.4% of the population** reported having been diagnosed with COPD.¹



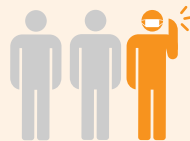
In 2021, COPD accounted for an estimated **138,000** deaths.²



COPD is the **3rd leading cause** of hospital readmissions in the United States.⁴



In one study, **1/3 of COPD patients** reported they were prevented from working because of their COPD.⁵

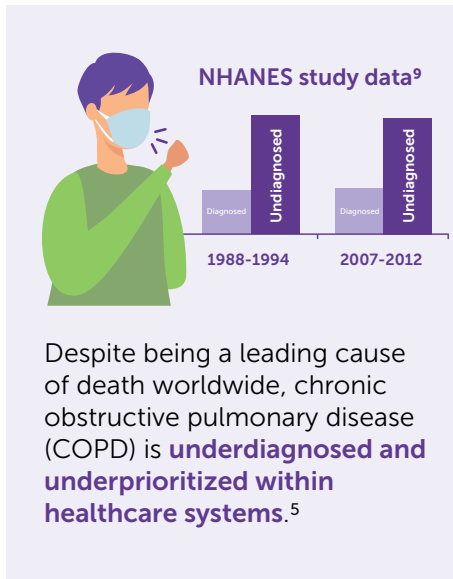


A 2024 study concluded that the total direct costs for COPD in the United States in 2019 were **31.3 billion** and projected to grow to **60.5 billion** in 2029.³

Sources:

- [1 https://www.cdc.gov/cdi/indicator-definitions/chronic-obstructive-pulmonary-disease. Accessed Oct 2024.](https://www.cdc.gov/cdi/indicator-definitions/chronic-obstructive-pulmonary-disease)
- [2 https://www.uspharmacist.com/article/copd-prevalence-risks-and-mortality. Accessed Oct 2024.](https://www.uspharmacist.com/article/copd-prevalence-risks-and-mortality)
- [3 https://www.sciencedirect.com/science/article/pii/S0012369223058324. Accessed Oct 2024.](https://www.sciencedirect.com/science/article/pii/S0012369223058324)
- [4 https://www.atsjournals.org/doi/10.1513/AnnalsATS.201811-755WS](https://www.atsjournals.org/doi/10.1513/AnnalsATS.201811-755WS)
- [5 https://www.ncbi.nlm.nih.gov/pmc/articles/PMC6857494/](https://www.ncbi.nlm.nih.gov/pmc/articles/PMC6857494/)

Let's put a spotlight on COPD.



Studies show that accurate diagnosis of COPD in primary care would **likely reduce exacerbations and the economic burden of COPD.**⁶

Spirometry is the **standard for diagnosing COPD.**⁷

What can be done?

Results from a database study of more than 5,000 patients reported that only approximately one-third of those with a clinical suspicion of COPD had undergone spirometry. To ensure a timely and accurate diagnosis, spirometry should be performed in the primary care setting, where patients may present with early symptoms of or risk factors for COPD.⁸

Increase access to spirometry

- Equip healthcare providers with easy-to-use spirometry solution devices.
- Offer portable, PC and connected spirometry solution for easy integration into practice workflow.

Improve education and awareness on spirometry as a diagnostic tool

- Educate on when spirometry should be performed.
- Emphasize that spirometry is the standard in diagnosing COPD.

Expand spirometry training

- Webinars for how to use spirometry equipment.
- Provide clear guidance on how to prepare patients for test, and how to conduct a successful spirometry maneuver.

Sources:

⁵ <https://www.ncbi.nlm.nih.gov/pmc/articles/PMC9047462/>

⁶ <https://nddmed.com/blog/2023/patients-experience-improved-outcomes-with-early-detection-of-copd-yet-late-diagnoses-remain-the-norm>. Accessed Oct 2024.

⁷ <https://goldcopd.org/gold-spirometry-guide/>. Accessed Oct 2024.

⁸ <https://www.ncbi.nlm.nih.gov/pmc/articles/PMC9047462/>

⁹ <https://pmc.ncbi.nlm.nih.gov/articles/PMC4722830/>

Distributor: Kahntact Medical | 800.742.4909 | kahntactmedical.com